

Tabernacle secretary
Kirchheim-Teck – around 1750





Here you see a very fine baroque piece of furniture from Kirchheim-Teck (around 175) that is fully covered by inlays.

The acorn-shaped feet carry a chest of drawers with three lockable drawers that are inwardly declining on the front side.

In the center, there is a reset writing desk with a fold-out writing surface. The compartment holds a convenient interior with small drawers.

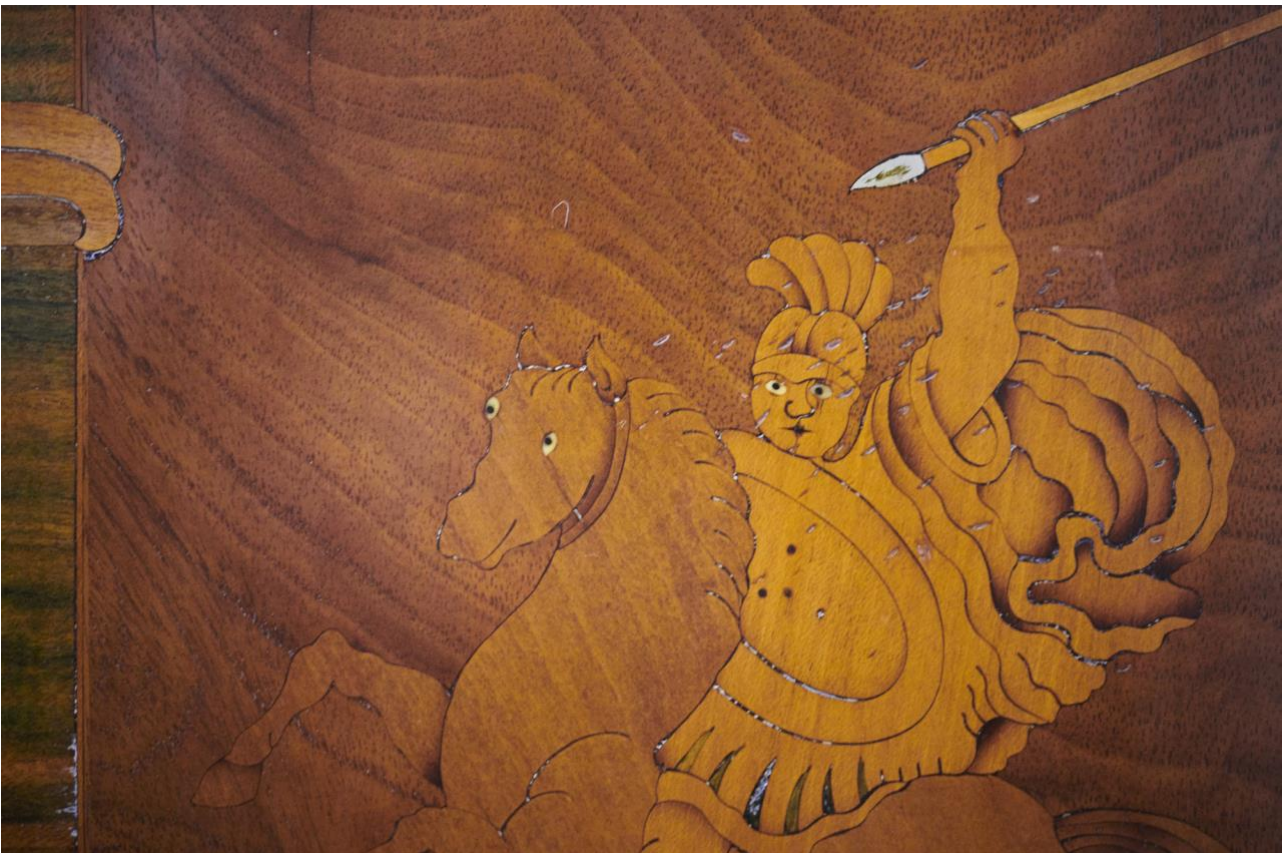
The top piece features a lockable central tabernacle door. On it's sides there are two rows of five drawers. When the door is closed all drawers are automatically locked. A double-stepped cornice rests on top.

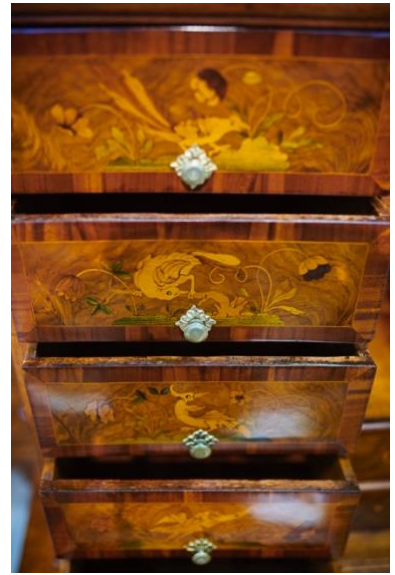






Both sides hold depictions of antique warriors, a Swordsman with a hound and a rider with a spear.





The secretary is veneered in precious wood on the front and both sides. It is covered with inlays of exotic birds that are placed in mirrored positions all over the front. All figures shown have beautifully crafted pupils made of nacre.

Additionally, many flowers, bouquets, antique vases and coat of arms cartouches are inlaid of various local and beautifully crafted hardwoods. The brass fittings are gold-plated. It is most certainly a unique baroque piece of furniture.







